

Vacant  
Chair  
Keith Packard  
Vice Chair



Katie Hobbs  
Governor  
Matthew A. Scheller  
Executive Director

---

## ARIZONA BOARD OF FINGERPRINTING

Post Office Box 6129 • Phoenix, Arizona 85005-6129 • Telephone (602) 265-0135 • Fax (602) 265-6240  
info@fingerprint.az.gov • [fingerprint.az.gov](http://fingerprint.az.gov)

August 30, 2024

Katie Hobbs, Governor  
Arizona State Capitol  
1700 W. Washington St., 9th Floor  
Phoenix, AZ 85007

Dear Governor Hobbs:

The Arizona Board of Fingerprinting (Board) respectfully submits the following budget proposal for FY 2026, the Board's Operating Plan and Five Year Strategic Plan for your review. The Board considers applications for good-cause exceptions and central-registry exceptions and determines if Applicants are rehabilitated from their history of criminal behavior or acts of child abuse or neglect.

The Board is proud of its achievements in FY 2024. A few of the highlights include:

- The Board received 5,525 applications (5,441 good-cause exception applications and 84 central-registry exception applications). This represents a 10.8% increase from FY 2023.
- The Board continues to process applications very efficiently and overall wait times for applicants continues to be below the statutory time frames.
- The average number of days spent processing applications from receipt to expedited review is again below the statutorily required 20 days.
- The Board communicates with applicants effectively and efficiently based on the high level of applications completed on initial submission (81.93%)
- The Board Investigator has exceeded the Board's goal (96%) for the percentage of recommendations accepted at an expedited review. The very high acceptance rate (99.44%) makes Board meetings more efficient

The Board looks forward to building on these successes and providing outstanding service to the public. If you have any questions regarding the accompanying budget schedules and explanatory information, please do not hesitate to contact me at (602) 265-3747 or [matthew.scheller@fingerprint.az.gov](mailto:matthew.scheller@fingerprint.az.gov).

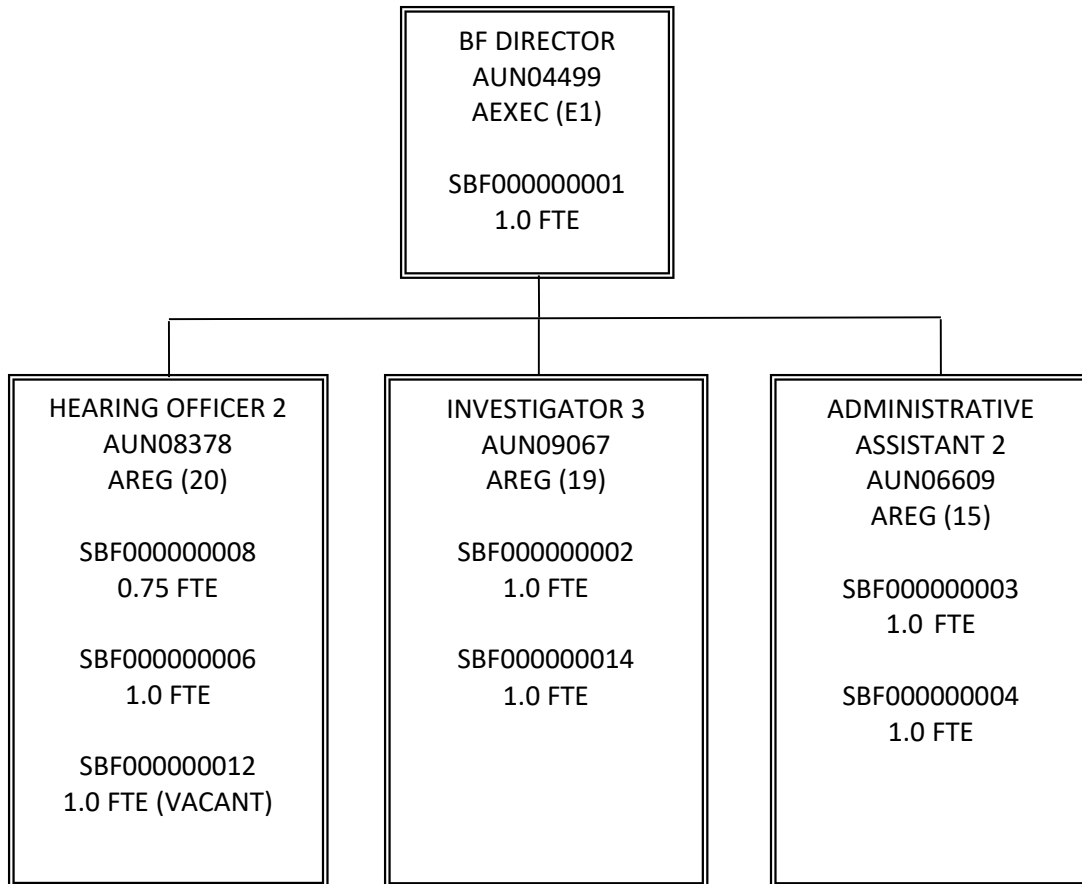
Sincerely,

A handwritten signature in blue ink, appearing to read "Matthew A. Scheller".

Matthew A. Scheller  
Executive Director

cc: Curtis Blanck, Budget Analyst, Governor's Office of Strategic Planning and Budgeting

**Arizona Board of Fingerprinting  
Organizational Chart  
As of July 1, 2024**





# State of Arizona Budget Request

State Agency

Board of Fingerprinting

A.R.S. Citation: **A.R.S. § 41-619.52**

## Governor Hobbs:

This and the accompanying budget schedules, statements and explanatory information constitute the operating budget request for this agency for Fiscal Year 2026.

To the best of my knowledge all statements and explanations contained in the estimates submitted are true and correct.

Agency Head: **Matthew A. Scheller**

Title: **Executive Director**

*Matthew A. Scheller* 8/22/2024

(signature)

Phone: 6022653747

Prepared by: Matthew A. Scheller

Email Address: matthew.scheller@fingerprinterprint.az.gov

Date Prepared: August 22, 2024

<b>Appropriated Funds</b>		<b>FY 2025 Expenditure Plan</b>	<b>FY 2026 Funding Issue</b>	<b>FY 2026 Total Request</b>
Total Amount Requested:		-	-	-
Board of Fingerprinting Fund		-	-	-
<b>Non-Appropriated Funds</b>		<b>FY 2025 Expenditure Plan</b>	<b>FY 2026 Funding Issue</b>	<b>FY 2026 Total Request</b>
Total Amount Planned:		829.7	-	829.7
Board of Fingerprinting Fund		829.7	-	829.7
Board of Fingerprinting Total:		829.7	-	829.7

## Revenue Schedule

<b>Agency:</b>	<b>Board of Fingerprinting</b>
----------------	--------------------------------

<b>Fund:</b>	<b>BF2435 Board of Fingerprinting Fund</b>
--------------	--

AFIS Code	Category of Receipt and Description	FY 2024 Actuals	FY 2025 Estimate	FY 2026 Request
4901	Operating Transfers In	827.7	800.0	800.0
<b>Board of Fingerprinting Fund Total:</b>		<b>827.7</b>	<b>800.0</b>	<b>800.0</b>

---

### Forecast Methodology

BFA receives a portion (\$4.00) of the fingerprint-clearance-card fee collected by the Arizona Department of Public Safety (PSA).

In Fiscal Year 2024, PSA received 206,922 Fingerprint Clearance Card Applications and transmitted fees to the Board in the amount of \$827,688. In Fiscal Year 2023, PSA received 200,708 Fingerprint Clearance Card Applications and transmitted fees to the Board in the amount of \$802,832. FY 2024 was the third full year that the Board received fees at \$4.00 per applicant. In FY 2021, the Board adopted a fee decrease from \$7.00 to \$4.00, which was published in the Administrative Code with an effective date of September 30, 2020.

The revenue forecast projection assumes that PSA will receive 200,000 fingerprint clearance card applications in FY 2025 and FY 2026. BFA will receive revenues of \$4.00 x 200,000 applications for \$800,000 in revenues.

Additions to the fingerprint card system over the past few years and vacancies rates in positions that require a fingerprint clearance card have caused an increase in the number of card applications. Therefore, the BFA projection of 200,000 fingerprint clearance card applications represents a rough projection.

## Revenue Forecasting Methodologies

**Agency:** BFA – Board of Fingerprinting

**Fund:** 2435 – Board of Fingerprinting Fund

**Justification:**

BFA receives a portion (\$4.00) of the fingerprint-clearance-card fee collected by the Arizona Department of Public Safety (PSA).

In Fiscal Year 2024, PSA received 206,922 Fingerprint Clearance Card Applications and transmitted fees to the Board in the amount of \$827,688. In Fiscal Year 2023, PSA received 200,708 Fingerprint Clearance Card Applications and transmitted fees to the Board in the amount of \$802,832. FY 2024 was the third full year that the Board received fees at \$4.00 per applicant. In FY 2021, the Board adopted a fee decrease from \$7.00 to \$4.00, which was published in the Administrative Code with an effective date of September 30, 2020.

The revenue forecast projection assumes that PSA will receive 200,000 fingerprint clearance card applications in FY 2025 and FY 2026. BFA will receive revenues of \$4.00 x 200,000 applications for \$800,000 in revenues.

Additions to the fingerprint card system over the past few years and vacancies rates in positions that require a fingerprint clearance card have caused an increase in the number of card applications. Therefore, the BFA projection of 200,000 fingerprint clearance card applications represents a rough projection.

## Sources and Uses

**Agency:** Board of Fingerprinting

**Fund:** BF2435 Board of Fingerprinting Fund

Revenues come from fees charged for obtaining a fingerprint clearance card and are used to operate the Board of Fingerprinting.

### Cash Flow Summary

	FY 2024 Actuals	FY 2025 Estimate	FY 2026 Request
Beginning Balance	1,524.0	391.5	361.8
Revenue (from Revenue Schedule)	827.7	800.0	800.0
<b>Total Available</b>	<b>2,351.7</b>	<b>1,191.5</b>	<b>1,161.8</b>
Total Appropriated Disbursements	1,203.1	-	-
Total Non-Appropriated Disbursements	757.1	829.7	829.7
Balance Forward to Next Year	391.5	361.8	332.1

Explanation for Negative Ending Balance(s): Board of Fingerprinting

### Appropriated Expenditure

Expenditure Categories	FY 2024 Actuals	FY 2025 Estimate	FY 2026 Request
Personal Services	-	-	-
Employee Related Expenditures	-	-	-
Professional & Outside Services	-	-	-
Travel In-State	-	-	-
Travel Out-Of-State	-	-	-
Food	-	-	-
Aid To Organizations & Individuals	-	-	-
Other Operating Expenditures	-	-	-
Equipment	-	-	-
Capital Outlay	-	-	-
Capital Equipment	-	-	-
Non-Capital Equipment	-	-	-
Debt Service	-	-	-
Cost Allocation & Indirect Costs	-	-	-
Transfers-Out	-	-	-
<b>Appropriated Expenditure Sub-Total:</b>	<b>-</b>	<b>-</b>	<b>-</b>
Non-Lapsing Authority from Prior Years	0.0	-	-
Administrative Adjustments	3.1	-	-
Capital Projects (Land, Bldgs, Improv)	-	-	-
Appropriated 27th Pay Roll	-	-	-
Legislative Fund Transfers	1,200.0	-	-
IT Project Transfers	-	-	-
Proposed Fund Transfer	-	-	-

## Sources and Uses

<b>Agency:</b>	<b>Board of Fingerprinting</b>
----------------	--------------------------------

<b>Fund:</b>	<b>BF2435 Board of Fingerprinting Fund</b>
--------------	--

Residual Equity Transfer	-	-	-
Transfer Due to Fund Balance Cap	-	-	-
Prior Committed or Obligated Expenditures (no entry for AY)	-	-	-
Non-Appropriated 27th Pay Roll	-	-	-
<b>Appropriated Expenditure Total:</b>	1,203.1	-	-
<b>Appropriated FTE</b>	-	-	-

<b>Non-Appropriated Expenditure</b>
-------------------------------------

	FY 2024 Actuals	FY 2025 Estimate	FY 2026 Request
<b>Expenditure Categories</b>			
Personal Services	411.6	447.6	447.6
Employee Related Expenditures	153.4	179.0	179.0
Professional & Outside Services	35.7	36.0	36.0
Travel In-State	-	-	-
Travel Out-Of-State	-	-	-
Food	-	-	-
Aid To Organizations & Individuals	-	-	-
Other Operating Expenditures	140.9	155.5	155.5
Equipment	-	-	-
Capital Outlay	-	-	-
Capital Equipment	-	-	-
Non-Capital Equipment	15.5	11.6	11.6
Debt Service	-	-	-
Cost Allocation & Indirect Costs	-	-	-
Transfers-Out	-	-	-
<b>Non-Appropriated Expenditure Sub-Total:</b>	<b>757.1</b>	<b>829.7</b>	<b>829.7</b>
Non-Lapsing Authority from Prior Years	-	-	-
Administrative Adjustments	-	-	-
Capital Projects (Land, Bldgs, Improv)	-	-	-
Appropriated 27th Pay Roll	-	-	-
Legislative Fund Transfers	-	-	-
IT Project Transfers	-	-	-
Proposed Fund Transfer	-	-	-
Residual Equity Transfer	-	-	-
Transfer Due to Fund Balance Cap	-	-	-
Prior Committed or Obligated Expenditures (no entry for AY)	-	-	-
Non-Appropriated 27th Pay Roll	-	-	-

## Sources and Uses

**Agency:** Board of Fingerprinting

**Fund:** BF2435 Board of Fingerprinting Fund

<b>Non-Appropriated Expenditure Total:</b>	757.1	829.7	829.7
<b>Non-Appropriated FTE</b>	7.0	8.0	8.0



# Funding Issue List

**Agency:** Board of Fingerprinting

FY 2026

Priority	Funding Issue Title	Total FTE	Total Amount	General Fund	Other Appropriated Funds	Non- Appropriated Funds
		-	-	-	-	-
	<b>Total:</b>	-	-	-	-	-

**Funding Issue Detail**

**Agency:** Board of Fingerprinting

**Issue:**

**Calculated ERE:**  
**Uniform Allowance:**

**Program:**  
**Fund:**

**Expenditure Categories**

**FY 2026**

**Program/Fund Total:** \_\_\_\_\_ -

## Funding Issue Narrative

**Agency:** Board of Fingerprinting

**Issue:**

**Description of Issue:**

**Proposal:**

**Alternatives  
Considered:**

**Impact of Not  
Funding This Year:**

**Statutory Reference:**

**Equipment to be  
Purchased (if  
applicable):**

**Classification of New  
Positions:**

**Annualization(s):**

**Alignment with  
Agency's Strategic  
Plan or Statutory  
Responsibilities:**

**Impact on Historically  
Underserved,  
Marginalized, or  
Adversely Affected  
Groups:**

**How has feedback  
been incorporated  
from groups directly  
impacted by  
proposal?:**

**Description of how  
this furthers the  
Governor's priorities:**

## Summary of Expenditure and Budget Request for All Funds

**Agency:** Board of Fingerprinting

<b>Appropriated Funds</b>	<b>FY 2024 Actuals</b>	<b>FY 2025 Expenditure Plan</b>	<b>FY 2026 Funding Issue</b>	<b>FY 2026 Total Request</b>
<b>Program:</b>				
BFA-1-0 Fingerprint Board	-	-	-	-
<b>Appropriated Funds Total:</b>	-	-	-	-
<b>Expenditure Categories</b>				
FTE	-	-	-	-
Personal Services	-	-	-	-
Employee Related Expenditures	-	-	-	-
<b>Subtotal Personal Services and ERE</b>	-	-	-	-
Professional & Outside Services	-	-	-	-
Other Operating Expenditures	-	-	-	-
Non-Capital Equipment	-	-	-	-
Transfers-Out	-	-	-	-
<b>Expenditure Categories Total:</b>	-	-	-	-

## Summary of Expenditure and Budget Request for All Funds

**Agency:** Board of Fingerprinting

<b>Non-Appropriated</b>		<b>FY 2024 Actuals</b>	<b>FY 2025 Expenditure Plan</b>	<b>FY 2026 Funding Issue</b>	<b>FY 2026 Total Request</b>
<b>Program:</b>					
BFA-1-0	Fingerprint Board	757.1	829.7	-	829.7
<b>Non-Appropriated Total:</b>		<b>757.1</b>	<b>829.7</b>	<b>-</b>	<b>829.7</b>
<b>Expenditure Categories</b>					
	FTE	7.0	8.0	-	8.0
	Personal Services	411.6	447.6	-	447.6
	Employee Related Expenditures	153.4	179.0	-	179.0
	<b>Subtotal Personal Services and ERE</b>	<b>565.0</b>	<b>626.6</b>	<b>-</b>	<b>626.6</b>
	Professional & Outside Services	35.7	36.0	-	36.0
	Other Operating Expenditures	140.9	155.5	-	155.5
	Non-Capital Equipment	15.5	11.6	-	11.6
	Transfers-Out	-	-	-	-
<b>Expenditure Categories Total:</b>		<b>757.1</b>	<b>829.7</b>	<b>-</b>	<b>829.7</b>
<b>Board of Fingerprinting Total for All Funds:</b>		<b>757.1</b>	<b>829.7</b>	<b>-</b>	<b>829.7</b>

<b>Appropriated and Non-Appropriated</b>		<b>FY 2024 Actuals</b>	<b>FY 2025 Expenditure Plan</b>	<b>FY 2025 Funding Issue</b>	<b>FY 2026 Total Request</b>
BFA-1-0	Fingerprint Board	757.1	829.7	-	829.7
<b>Board of Fingerprinting Total for All Funds:</b>		<b>757.1</b>	<b>829.7</b>	<b>-</b>	<b>829.7</b>

## Summary of Expenditure and Budget Request for Selected Funds

<b>Agency:</b>	<b>Board of Fingerprinting</b>
----------------	--------------------------------

<b>Fund:</b>	<b>BF2435 Board of Fingerprinting Fund (Appropriated)</b>
--------------	---

	FY 2024 Actuals	FY 2025 Expenditure Plan	FY 2026 Funding Issue	FY 2026 Total Request
<b>Program:</b>				
BFA-1-0 Fingerprint Board	-	-	-	-
<b>Board of Fingerprinting Fund (Appropriated)</b>	-	-	-	-
<b>Summary Total:</b>				
<b>Expenditure Categories</b>				
FTE	-	-	-	-
Personal Services	-	-	-	-
Employee Related Expenditures	-	-	-	-
<b>Subtotal Personal Services and ERE</b>	-	-	-	-
Professional & Outside Services	-	-	-	-
Other Operating Expenditures	-	-	-	-
Non-Capital Equipment	-	-	-	-
Transfers-Out	-	-	-	-
<b>Expenditure Categories Total:</b>	-	-	-	-

## Summary of Expenditure and Budget Request for Selected Funds

<b>Agency:</b>	<b>Board of Fingerprinting</b>
----------------	--------------------------------

<b>Fund:</b>	<b>BF2435 Board of Fingerprinting Fund (Non-Appropriated)</b>
--------------	---

	FY 2024 Actuals	FY 2025 Expenditure Plan	FY 2026 Funding Issue	FY 2026 Total Request
<b>Program:</b>				
BFA-1-0 Fingerprint Board	757.1	829.7	-	829.7
<b>Board of Fingerprinting Fund (Non-Appropriated) Summary Total:</b>	<b>757.1</b>	<b>829.7</b>	-	<b>829.7</b>
<b>Expenditure Categories</b>				
FTE	7.0	8.0	-	8.0
Personal Services	411.6	447.6	-	447.6
Employee Related Expenditures	153.4	179.0	-	179.0
<b>Subtotal Personal Services and ERE</b>	<b>565.0</b>	<b>626.6</b>	-	<b>626.6</b>
Professional & Outside Services	35.7	36.0	-	36.0
Other Operating Expenditures	140.9	155.5	-	155.5
Non-Capital Equipment	15.5	11.6	-	11.6
Transfers-Out	-	-	-	-
<b>Expenditure Categories Total:</b>	<b>757.1</b>	<b>829.7</b>	-	<b>829.7</b>

## Program Budget Unit Summary of Expenditure and Budget Request for All Funds

**Agency:** Board of Fingerprinting

	FY 2024 Actuals	FY 2025 Expenditure Plan	FY 2026 Funding Issue	FY 2026 Total Request
<b>Program: BFA-1-0 Fingerprint Board</b>				
<b>Expenditure Categories</b>				
FTE	7.0	8.0	-	8.0
Personal Services	411.6	447.6	-	447.6
Employee Related Expenditures	153.4	179.0	-	179.0
<b>Subtotal Personal Services and ERE</b>	<b>565.0</b>	<b>626.6</b>	<b>-</b>	<b>626.6</b>
Professional & Outside Services	35.7	36.0	-	36.0
Other Operating Expenditures	140.9	155.5	-	155.5
Non-Capital Equipment	15.5	11.6	-	11.6
Transfers-Out	-	-	-	-
<b>Expenditure Categories Total:</b>	<b>757.1</b>	<b>829.7</b>	<b>-</b>	<b>829.7</b>

### Fund Source

#### Appropriated Funds

Board of Fingerprinting Fund (Appropriated)	-	-	-	-
<b>Appropriated Funds Total:</b>	<b>-</b>	<b>-</b>	<b>-</b>	<b>-</b>

#### Non-Appropriated Funds

Board of Fingerprinting Fund (Non-Appropriated)	757.1	829.7	-	829.7
<b>Non-Appropriated Funds Total:</b>	<b>757.1</b>	<b>829.7</b>	<b>-</b>	<b>829.7</b>
<b>Fingerprint Board Total:</b>	<b>757.1</b>	<b>829.7</b>	<b>-</b>	<b>829.7</b>

**Sub Program: BFA-1-1 Fingerprint Board**

### Expenditure Categories

FTE	7.0	8.0	-	8.0
Personal Services	411.6	447.6	-	447.6
Employee Related Expenditures	153.4	179.0	-	179.0
<b>Subtotal Personal Services and ERE</b>	<b>565.0</b>	<b>626.6</b>	<b>-</b>	<b>626.6</b>
Professional & Outside Services	35.7	36.0	-	36.0
Other Operating Expenditures	140.9	155.5	-	155.5
Non-Capital Equipment	15.5	11.6	-	11.6
Transfers-Out	-	-	-	-



## Program Budget Unit Summary of Expenditure and Budget Request for All Funds

**Agency:** Board of Fingerprinting

	FY 2024 Actuals	FY 2025 Expenditure Plan	FY 2026 Funding Issue	FY 2026 Total Request
<b>Program:</b> BFA-1-0 Fingerprint Board				
<b>Sub Program:</b> BFA-1-1 Fingerprint Board				

<b>Expenditure Categories Total:</b>	757.1	829.7	-	829.7
--------------------------------------	-------	-------	---	-------

### Fund Source

**Appropriated Funds**

Board of Fingerprinting Fund (Appropriated)	-	-	-	-
<b>Appropriated Funds Total:</b>	-	-	-	-

**Non-Appropriated Funds**

Board of Fingerprinting Fund (Non-Appropriated)	757.1	829.7	-	829.7
<b>Non-Appropriated Funds Total:</b>	757.1	829.7	-	829.7
<b>Fingerprint Board Total:</b>	757.1	829.7	-	829.7

## Program Budget Unit Summary of Expenditure and Budget Request for Selected Funds

**Agency:** Board of Fingerprinting

	FY 2024 Actuals	FY 2025 Expenditure Plan	FY 2026 Funding Issue	FY 2026 Total Request
--	--------------------	--------------------------------	--------------------------	--------------------------

**Program:** BFA-1-0 Fingerprint Board

**Fund:** BF2435 Board of Fingerprinting Fund

**Appropriated**

Personal Services	-	-	-	-
Employee Related Expenditures	-	-	-	-
<b>Subtotal Personal Services and ERE</b>	-	-	-	-
Professional & Outside Services	-	-	-	-
Other Operating Expenditures	-	-	-	-
Non-Capital Equipment	-	-	-	-
Transfers-Out	-	-	-	-
<b>Expenditure Categories Total:</b>	-	-	-	-

**Non-Appropriated**

Personal Services	411.6	447.6	-	447.6
Employee Related Expenditures	153.4	179.0	-	179.0
<b>Subtotal Personal Services and ERE</b>	565.0	626.6	-	626.6
Professional & Outside Services	35.7	36.0	-	36.0
Other Operating Expenditures	140.9	155.5	-	155.5
Non-Capital Equipment	15.5	11.6	-	11.6
Transfers-Out	-	-	-	-
<b>Expenditure Categories Total:</b>	757.1	829.7	-	829.7
<b>Board of Fingerprinting Fund Total:</b>	757.1	829.7	-	829.7
<b>Program Total for Select Funds:</b>	757.1	829.7	-	829.7

**Sub Program:** BFA-1-1 Fingerprint Board

**Fund:** BF2435 Board of Fingerprinting Fund

**Appropriated**

Personal Services	-	-	-	-
Employee Related Expenditures	-	-	-	-
<b>Subtotal Personal Services and ERE</b>	-	-	-	-

## Program Budget Unit Summary of Expenditure and Budget Request for Selected Funds

**Agency:** Board of Fingerprinting

	FY 2024 Actuals	FY 2025 Expenditure Plan	FY 2026 Funding Issue	FY 2026 Total Request
<b>Program:</b> BFA-1-0 Fingerprint Board				
<b>Sub Program:</b> BFA-1-1 Fingerprint Board				
<b>Fund:</b> BF2435 Board of Fingerprinting Fund				
Professional & Outside Services	-	-	-	-
Other Operating Expenditures	-	-	-	-
Non-Capital Equipment	-	-	-	-
Transfers-Out	-	-	-	-
<b>Expenditure Categories Total:</b>	-	-	-	-
<b>Non-Appropriated</b>				
Personal Services	411.6	447.6	-	447.6
Employee Related Expenditures	153.4	179.0	-	179.0
<b>Subtotal Personal Services and ERE</b>	<b>565.0</b>	<b>626.6</b>	-	<b>626.6</b>
Professional & Outside Services	35.7	36.0	-	36.0
Other Operating Expenditures	140.9	155.5	-	155.5
Non-Capital Equipment	15.5	11.6	-	11.6
Transfers-Out	-	-	-	-
<b>Expenditure Categories Total:</b>	<b>757.1</b>	<b>829.7</b>	-	<b>829.7</b>
<b>Board of Fingerprinting Fund Total:</b>	<b>757.1</b>	<b>829.7</b>	-	<b>829.7</b>
<b>Sub Program Total for Select Funds:</b>	<b>757.1</b>	<b>829.7</b>	-	<b>829.7</b>

## Program Summary of Expenditure and Budget Request

**Agency:** Board of Fingerprinting

**Program:** Fingerprint Board

<b>Program Summary</b>		FY 2024 Actuals	FY 2025 Expenditure Plan	FY 2026 Funding Issue	FY 2026 Total Request
BFA-1-1	Fingerprint Board	757.1	829.7	-	829.7
<b>Fingerprint Board Summary Total:</b>		<b>757.1</b>	<b>829.7</b>	<b>-</b>	<b>829.7</b>
<b>Expenditure Categories</b>					
FTE	FTE	7.0	8.0	-	8.0
6000	Personal Services	411.6	447.6	-	447.6
6100	Employee Related Expenditures	153.4	179.0	-	179.0
<b>Subtotal Personal Services and ERE</b>		<b>565.0</b>	<b>626.6</b>	<b>-</b>	<b>626.6</b>
6200	Professional & Outside Services	35.7	36.0	-	36.0
7000	Other Operating Expenditures	140.9	155.5	-	155.5
8500	Non-Capital Equipment	15.5	11.6	-	11.6
9100	Transfers-Out	-	-	-	-
<b>Expenditure Categories Total:</b>		<b>757.1</b>	<b>829.7</b>	<b>-</b>	<b>829.7</b>
<b>Fund Source</b>					
<b>Appropriated Funds</b>					
BF2435	Board of Fingerprinting Fund (Appropriated)	-	-	-	-
<b>Appropriated Funds Total:</b>		<b>-</b>	<b>-</b>	<b>-</b>	<b>-</b>
<b>Non-Appropriated Funds</b>					
BF2435	Board of Fingerprinting Fund (Non- Appropriated)	757.1	829.7	-	829.7
<b>Non-Appropriated Funds Total:</b>		<b>757.1</b>	<b>829.7</b>	<b>-</b>	<b>829.7</b>
<b>Fingerprint Board Summary Total:</b>		<b>757.1</b>	<b>829.7</b>	<b>-</b>	<b>829.7</b>

## Program Summary of Expenditure and Budget Request for Selected Funds

**Agency:** Board of Fingerprinting

**Program:** Fingerprint Board

**Fund:** BF2435 Board of Fingerprinting Fund (Appropriated)

<b>Program Expenditures</b>		FY 2024 Actuals	FY 2025 Expenditure Plan	FY 2026 Funding Issue	FY 2026 Total Request
BFA-1-1	Fingerprint Board	-	-	-	-
	<b>Board of Fingerprinting Fund (Appropriated)</b>	-	-	-	-
	<b>Summary Total:</b>	-	-	-	-
<b>Appropriated Funding</b>					
6000	Personal Services	-	-	-	-
6100	Employee Related Expenditures	-	-	-	-
	<b>Subtotal Personal Services and ERE</b>	-	-	-	-
6200	Professional & Outside Services	-	-	-	-
7000	Other Operating Expenditures	-	-	-	-
8500	Non-Capital Equipment	-	-	-	-
9100	Transfers-Out	-	-	-	-
	<b>Expenditure Categories Total:</b>	-	-	-	-
	<b>Fund BF2435 - A Total:</b>	-	-	-	-

## Program Summary of Expenditure and Budget Request for Selected Funds

<b>Agency:</b>	<b>Board of Fingerprinting</b>
<b>Program:</b>	<b>Fingerprint Board</b>
<b>Fund:</b>	<b>BF2435 Board of Fingerprinting Fund (Non-Appropriated)</b>

<b>Program Expenditures</b>	FY 2024 Actuals	FY 2025 Expenditure Plan	FY 2026 Funding Issue	FY 2026 Total Request
BFA-1-1 Fingerprint Board	757.1	829.7	-	829.7
<b>Board of Fingerprinting Fund (Non-Appropriated)</b>	<b>757.1</b>	<b>829.7</b>	<b>-</b>	<b>829.7</b>
<b>Summary Total:</b>	<b>757.1</b>	<b>829.7</b>	<b>-</b>	<b>829.7</b>
<b>Non-Appropriated Funding</b>				
6000 Personal Services	411.6	447.6	-	447.6
6100 Employee Related Expenditures	153.4	179.0	-	179.0
<b>Subtotal Personal Services and ERE</b>	<b>565.0</b>	<b>626.6</b>	<b>-</b>	<b>626.6</b>
6200 Professional & Outside Services	35.7	36.0	-	36.0
7000 Other Operating Expenditures	140.9	155.5	-	155.5
8500 Non-Capital Equipment	15.5	11.6	-	11.6
9100 Transfers-Out	-	-	-	-
<b>Expenditure Categories Total:</b>	<b>757.1</b>	<b>829.7</b>	<b>-</b>	<b>829.7</b>
<b>Fund BF2435 - N Total:</b>	757.1	829.7	-	829.7
<b>Fingerprint Board Total:</b>	757.1	829.7	-	829.7

## Program Expenditure Schedule

**Agency:** Board of Fingerprinting

	FY 2024 Actuals	FY 2025 Expenditure Plan	FY 2026 Funding Issue	FY 2026 Total Request
<b>Program: BFA-1-0 Fingerprint Board</b>				
<b>FTE</b>				
FTE	7.0	8.0	-	8.0
<b>Expenditure Category Total:</b>	-	-	-	-
<b>Fund Source</b>				
<b>Non-Appropriated Funds</b>				
BF2435 Board of Fingerprinting Fund (Non-Appropriated)	7.0	8.0	-	8.0
<b>Non-Appropriated Funds Total:</b>	<b>7.0</b>	<b>8.0</b>	<b>-</b>	<b>8.0</b>
<b>Fund Source Total:</b>	<b>7.0</b>	<b>8.0</b>	<b>-</b>	<b>8.0</b>
<b>Personal Services</b>				
Personal Services	411.6	447.6	-	447.6
<b>Expenditure Category Total:</b>	<b>411.6</b>	<b>447.6</b>	<b>-</b>	<b>447.6</b>
<b>Fund Source</b>				
<b>Non-Appropriated Funds</b>				
BF2435 Board of Fingerprinting Fund (Non-Appropriated)	411.6	447.6	-	447.6
<b>Non-Appropriated Funds Total:</b>	<b>411.6</b>	<b>447.6</b>	<b>-</b>	<b>447.6</b>
<b>Fund Source Total:</b>	<b>411.6</b>	<b>447.6</b>	<b>-</b>	<b>447.6</b>
<b>Employee Related Expenditures</b>				
Employee Related Expenses	-	179.0	-	179.0
FICA Taxes	30.4	-	-	-
Medical Insurance	62.7	-	-	-
Basic Life	0.0	-	-	-
Long-Term Disability (ASRS)	0.5	-	-	-
Dental Insurance	0.6	-	-	-
Workers' Compensation	3.2	-	-	-
Arizona State Retirement System	42.6	-	-	-
Alternate Retirement Contributions – Reemployed Retirees	5.6	-	-	-
Personnel Board Pro-Rata Charges	3.5	-	-	-
Information Technology Pro Rata Charge	2.5	-	-	-
Accumulated Sick Leave Fund Charge	1.6	-	-	-

## Program Expenditure Schedule

**Agency:** Board of Fingerprinting

		FY 2024 Actuals	FY 2025 Expenditure Plan	FY 2026 Funding Issue	FY 2026 Total Request
<b>Program: BFA-1-0 Fingerprint Board</b>					
<b>Expenditure Category Total:</b>		153.4	179.0	-	179.0
<b>Fund Source</b>					
<b>Appropriated Funds</b>					
BF2435 Board of Fingerprinting Fund (Appropriated)		-	-	-	-
<b>Appropriated Funds Total:</b>		-	-	-	-
<b>Non-Appropriated Funds</b>					
BF2435 Board of Fingerprinting Fund (Non-Appropriated)		153.4	179.0	-	179.0
<b>Non-Appropriated Funds Total:</b>		153.4	179.0	-	179.0
<b>Fund Source Total:</b>		153.4	179.0	-	179.0
<b>Professional &amp; Outside Services</b>					
Professional and Outside Services		-	36.0	-	36.0
Other Professional & Outside Services		35.7	-	-	-
<b>Expenditure Category Total:</b>		35.7	36.0	-	36.0
<b>Fund Source</b>					
<b>Non-Appropriated Funds</b>					
BF2435 Board of Fingerprinting Fund (Non-Appropriated)		35.7	36.0	-	36.0
<b>Non-Appropriated Funds Total:</b>		35.7	36.0	-	36.0
<b>Fund Source Total:</b>		35.7	36.0	-	36.0
<b>Other Operating Expenditures</b>					
Other Operating Expenses		-	155.5	-	155.5
Risk Management Charges to State Agencies		2.3	-	-	-
Internal Service Computer Processing, Hosting, Maintenance and Support Costs		3.4	-	-	-
External Programming and System Development Costs		3.8	-	-	-
Other External Computer Processing, Hosting, Maintenance and Support Costs		57.6	-	-	-
Charges Imposed Related to AFIS.		0.5	-	-	-
External Telecommunications Charges		3.5	-	-	-
Building Rent Charges to State Agencies		30.6	-	-	-



## Program Expenditure Schedule

**Agency:** Board of Fingerprinting

	FY 2024 Actuals	FY 2025 Expenditure Plan	FY 2026 Funding Issue	FY 2026 Total Request
<b>Program: BFA-1-0 Fingerprint Board</b>				
Internal Accounting, Budgeting & Financial Services	21.2	-	-	-
Repair & Maintenance - Other Equipment	1.9	-	-	-
Office Supplies	4.8	-	-	-
Postage & Delivery	10.8	-	-	-
Document Shredding and Destruction Services	0.5	-	-	-
Other Miscellaneous Operating	0.1	-	-	-
<b>Expenditure Category Total:</b>	<b>140.9</b>	<b>155.5</b>	<b>-</b>	<b>155.5</b>

### Fund Source

**Non-Appropriated Funds**

BF2435	Board of Fingerprinting Fund (Non-Appropriated)	140.9	155.5	-	155.5
<b>Non-Appropriated Funds Total:</b>		<b>140.9</b>	<b>155.5</b>	<b>-</b>	<b>155.5</b>
<b>Fund Source Total:</b>		<b>140.9</b>	<b>155.5</b>	<b>-</b>	<b>155.5</b>

### Non-Capital Equipment

Non-Capital Resources	-	11.6	-	11.6
Furniture - Non-Capital Purchase	0.5	-	-	-
Computer Equipment – Non- Capitalized Purchases	3.7	-	-	-
Other Equipment - Non- Capital Purchase	5.3	-	-	-
Purchased or licensed software / website	6.0	-	-	-
<b>Expenditure Category Total:</b>	<b>15.5</b>	<b>11.6</b>	<b>-</b>	<b>11.6</b>

### Fund Source

**Non-Appropriated Funds**

BF2435	Board of Fingerprinting Fund (Non-Appropriated)	15.5	11.6	-	11.6
<b>Non-Appropriated Funds Total:</b>		<b>15.5</b>	<b>11.6</b>	<b>-</b>	<b>11.6</b>
<b>Fund Source Total:</b>		<b>15.5</b>	<b>11.6</b>	<b>-</b>	<b>11.6</b>

### Transfers-Out

Transfers Out – Not Subject to Cost Allocation	-	-	-	-
<b>Expenditure Category Total:</b>	<b>-</b>	<b>-</b>	<b>-</b>	<b>-</b>

## Program Expenditure Schedule

**Agency:** Board of Fingerprinting

	FY 2024 Actuals	FY 2025 Expenditure Plan	FY 2026 Funding Issue	FY 2026 Total Request
<b>Program: BFA-1-0 Fingerprint Board</b>				
<b>Fund Source</b>				
<b>Non-Appropriated Funds</b>				
BF2435 Board of Fingerprinting Fund (Non-Appropriated)	-	-	-	-
<b>Non-Appropriated Funds Total:</b>	-	-	-	-
<b>Fund Source Total:</b>	-	-	-	-

**Employee Retirement Coverage**

Retirement System	FTE	Personal Services	Fund#
Arizona State Retirement System	8.0	447.6	BF2435-N

**Sub Program: BFA-1-1 Fingerprint Board**

	FTE	Personal Services	Fund#	
FTE	7.0	8.0	-	8.0
<b>Expenditure Category Total:</b>	-	-	-	-

**Fund Source**

<b>Non-Appropriated Funds</b>				
BF2435 Board of Fingerprinting Fund (Non-Appropriated)	7.0	8.0	-	8.0
<b>Non-Appropriated Funds Total:</b>	7.0	8.0	-	8.0
<b>Fund Source Total:</b>	7.0	8.0	-	8.0

**Personal Services**

Personal Services	411.6	447.6	-	447.6
<b>Expenditure Category Total:</b>	411.6	447.6	-	447.6

**Fund Source**

<b>Non-Appropriated Funds</b>				
BF2435 Board of Fingerprinting Fund (Non-Appropriated)	411.6	447.6	-	447.6
<b>Non-Appropriated Funds Total:</b>	411.6	447.6	-	447.6
<b>Fund Source Total:</b>	411.6	447.6	-	447.6

## Program Expenditure Schedule

**Agency:** Board of Fingerprinting

	FY 2024 Actuals	FY 2025 Expenditure Plan	FY 2026 Funding Issue	FY 2026 Total Request
<b>Program:</b> BFA-1-0 Fingerprint Board				

**Sub Program:** BFA-1-1 Fingerprint Board

**Employee Related Expenditures**

Employee Related Expenses	-	179.0	-	179.0
FICA Taxes	30.4	-	-	-
Medical Insurance	62.7	-	-	-
Basic Life	0.0	-	-	-
Long-Term Disability (ASRS)	0.5	-	-	-
Dental Insurance	0.6	-	-	-
Workers' Compensation	3.2	-	-	-
Arizona State Retirement System	42.6	-	-	-
Alternate Retirement Contributions – Reemployed Retirees	5.6	-	-	-
Personnel Board Pro-Rata Charges	3.5	-	-	-
Information Technology Pro Rata Charge	2.5	-	-	-
Accumulated Sick Leave Fund Charge	1.6	-	-	-
<b>Expenditure Category Total:</b>	<b>153.4</b>	<b>179.0</b>	-	<b>179.0</b>

**Fund Source**

**Appropriated Funds**

BF2435 Board of Fingerprinting Fund (Appropriated)	-	-	-	-
<b>Appropriated Funds Total:</b>	-	-	-	-

**Non-Appropriated Funds**

BF2435 Board of Fingerprinting Fund (Non- Appropriated)	153.4	179.0	-	179.0
<b>Non-Appropriated Funds Total:</b>	<b>153.4</b>	<b>179.0</b>	-	<b>179.0</b>
<b>Fund Source Total:</b>	<b>153.4</b>	<b>179.0</b>	-	<b>179.0</b>

## Program Expenditure Schedule

**Agency:** Board of Fingerprinting

	FY 2024 Actuals	FY 2025 Expenditure Plan	FY 2026 Funding Issue	FY 2026 Total Request
<b>Program: BFA-1-0 Fingerprint Board</b>				
<b>Sub Program: BFA-1-1 Fingerprint Board</b>				
<b>Professional &amp; Outside Services</b>				
Professional and Outside Services	-	36.0	-	36.0
Other Professional & Outside Services	35.7	-	-	-
<b>Expenditure Category Total:</b>	<b>35.7</b>	<b>36.0</b>	-	<b>36.0</b>
<b>Fund Source</b>				
<b>Non-Appropriated Funds</b>				
BF2435 Board of Fingerprinting Fund (Non-Appropriated)	35.7	36.0	-	36.0
<b>Non-Appropriated Funds Total:</b>	<b>35.7</b>	<b>36.0</b>	-	<b>36.0</b>
<b>Fund Source Total:</b>	<b>35.7</b>	<b>36.0</b>	-	<b>36.0</b>

## Program Expenditure Schedule

**Agency:** Board of Fingerprinting

	FY 2024 Actuals	FY 2025 Expenditure Plan	FY 2026 Funding Issue	FY 2026 Total Request
<b>Program:</b> BFA-1-0 Fingerprint Board				

**Sub Program:** BFA-1-1 Fingerprint Board

**Other Operating Expenditures**

Other Operating Expenses	-	155.5	-	155.5
Risk Management Charges to State Agencies	2.3	-	-	-
Internal Service Computer Processing, Hosting, Maintenance and Support Costs	3.4	-	-	-
External Programming and System Development Costs	3.8	-	-	-
Other External Computer Processing, Hosting, Maintenance and Support Costs	57.6	-	-	-
Charges Imposed Related to AFIS.	0.5	-	-	-
External Telecommunications Charges	3.5	-	-	-
Building Rent Charges to State Agencies	30.6	-	-	-
Internal Accounting, Budgeting & Financial Services	21.2	-	-	-
Repair & Maintenance - Other Equipment	1.9	-	-	-
Office Supplies	4.8	-	-	-
Postage & Delivery	10.8	-	-	-
Document Shredding and Destruction Services	0.5	-	-	-
Other Miscellaneous Operating	0.1	-	-	-
<b>Expenditure Category Total:</b>	<b>140.9</b>	<b>155.5</b>	-	<b>155.5</b>

**Fund Source**

**Non-Appropriated Funds**

BF2435	Board of Fingerprinting Fund (Non-Appropriated)	140.9	155.5	-	155.5
	<b>Non-Appropriated Funds Total:</b>	<b>140.9</b>	<b>155.5</b>	-	<b>155.5</b>
	<b>Fund Source Total:</b>	<b>140.9</b>	<b>155.5</b>	-	<b>155.5</b>

## Program Expenditure Schedule

**Agency:** Board of Fingerprinting

	FY 2024 Actuals	FY 2025 Expenditure Plan	FY 2026 Funding Issue	FY 2026 Total Request
<b>Program:</b> BFA-1-0 Fingerprint Board				
<b>Sub Program:</b> BFA-1-1 Fingerprint Board				
<b>Non-Capital Equipment</b>				
Non-Capital Resources	-	11.6	-	11.6
Furniture - Non-Capital Purchase	0.5	-	-	-
Computer Equipment – Non- Capitalized Purchases	3.7	-	-	-
Other Equipment - Non- Capital Purchase	5.3	-	-	-
Purchased or licensed software / website	6.0	-	-	-
<b>Expenditure Category Total:</b>	<b>15.5</b>	<b>11.6</b>	<b>-</b>	<b>11.6</b>

<b>Fund Source</b>					
<b>Non-Appropriated Funds</b>					
BF2435	Board of Fingerprinting Fund (Non-Appropriated)	15.5	11.6	-	11.6
<b>Non-Appropriated Funds Total:</b>		<b>15.5</b>	<b>11.6</b>	<b>-</b>	<b>11.6</b>
<b>Fund Source Total:</b>		<b>15.5</b>	<b>11.6</b>	<b>-</b>	<b>11.6</b>

<b>Transfers-Out</b>					
	Transfers Out – Not Subject to Cost Allocation	-	-	-	-
<b>Expenditure Category Total:</b>		<b>-</b>	<b>-</b>	<b>-</b>	<b>-</b>

<b>Fund Source</b>					
<b>Non-Appropriated Funds</b>					
BF2435	Board of Fingerprinting Fund (Non-Appropriated)	-	-	-	-
<b>Non-Appropriated Funds Total:</b>		<b>-</b>	<b>-</b>	<b>-</b>	<b>-</b>
<b>Fund Source Total:</b>		<b>-</b>	<b>-</b>	<b>-</b>	<b>-</b>

<b>Employee Retirement Coverage</b>					
Retirement System	FTE	Personal Services	Fund#		
Arizona State Retirement System	8.0	8.0	BF2435-N		

# Program Expenditure Schedule

**Agency:** Board of Fingerprinting

**FY 2024  
Actuals**

**FY 2025  
Expenditure  
Plan**

**FY 2026  
Funding  
Issue**

**FY 2026  
Total  
Request**

## Program Expenditure Schedule

<b>Agency:</b>	<b>Board of Fingerprinting</b>
----------------	--------------------------------

<b>Administrative Costs Summary</b>	<b>FY 2026</b>
Personal Services	24.9
ERE	16.6
<b>Administrative Costs Total:</b>	<b>41.5</b>

<b>Administrative Costs / Total Expenditure Ratio</b>	<b>Request</b>	<b>Admin %</b>
<b>FY 2026</b>	829.7	5.0%